

# MONTHLY MEMBERSHIP PROGRESS REPORT

LOCATION ILLINOIS

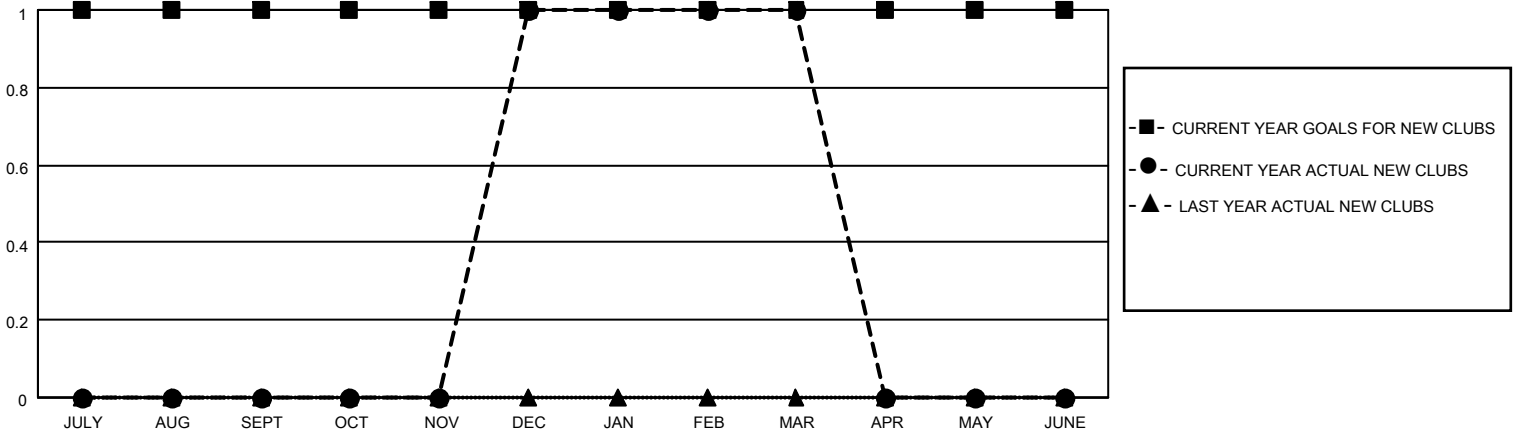
District 1 H

Results as of: 3/31/2021

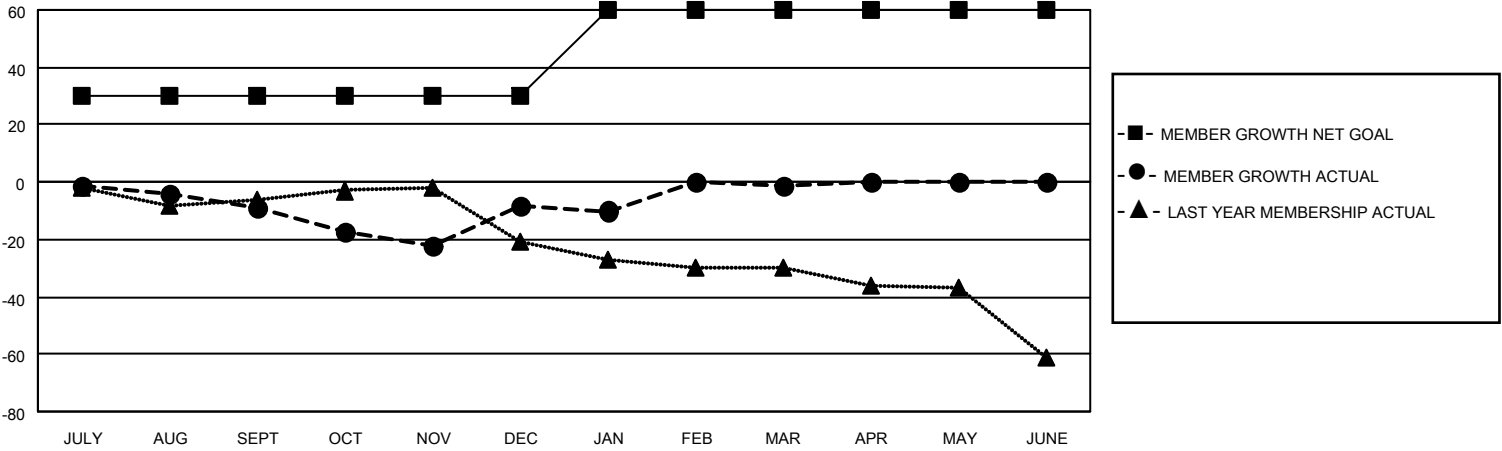
| Clubs                 |               |           |               |
|-----------------------|---------------|-----------|---------------|
| RESULTS FOR 2020-2021 |               |           |               |
| QUARTER               | NEW CLUB GOAL | NEW CLUBS | DROPPED CLUBS |
| JULY/AUG/SEPT         | 1             | 0         | 0             |
| OCT/NOV/DEC           | 0             | 1         | 0             |
| JAN/FEB/MAR           | 0             | 0         | 0             |
| APR/MAY/JUNE          | 0             | 0         | 0             |

| Members               |                        |                      |   |
|-----------------------|------------------------|----------------------|---|
| RESULTS FOR 2020-2021 |                        |                      |   |
| QUARTER               | MEMBER GROWTH NET GOAL | MEMBER GROWTH ACTUAL | DROPPED MEMBERS ACTUAL<br>(including transfers) |
| JULY/AUG/SEPT         | 30                     | 15                   | 19  |
| OCT/NOV/DEC           | 0                      | 36                   | 32  |
| JAN/FEB/MAR           | 30                     | 20                   | 12  |
| APR/MAY/JUNE          | 0                      | 0                    | 0   |

**GOALS AND ACTUAL NEW CLUBS CUMULATIVE**



**GOALS AND ACTUAL MEMBERS CUMULATIVE**



|                        |   |                                    |
|------------------------|---|------------------------------------|
| DROPPED CLUBS: 0       | 13 CLUBS OF 39 ADDED 1 OR MORE NEW MEMBERS                | <u>GENDER DISTRIBUTION</u>         |
| <u>DROPPED MEMBERS</u> | <a href="#">CLICK HERE FOR CUMULATIVE MEMBERSHIP DATA</a> | MALE 722 (75.92%)                  |
| DECEASED 15            |   | FEMALE 229 (24.08%)                |
| CLUB CANCELLED 0       |   | TOTAL FAMILY UNIT MEMBERS 139      |
| OTHER 48               |   | FAMILY MEMBERS PAYING HALF DUES 71 |
| <b>TOTAL 63</b>        |   |                                    |